



TILLOTSON LTD., CLASH INDUSTRIAL ESTATE,
TRALEE, CO. KERRY, IRELAND

PHONE: +353 66 7121911 FAX: +353 66 7124503

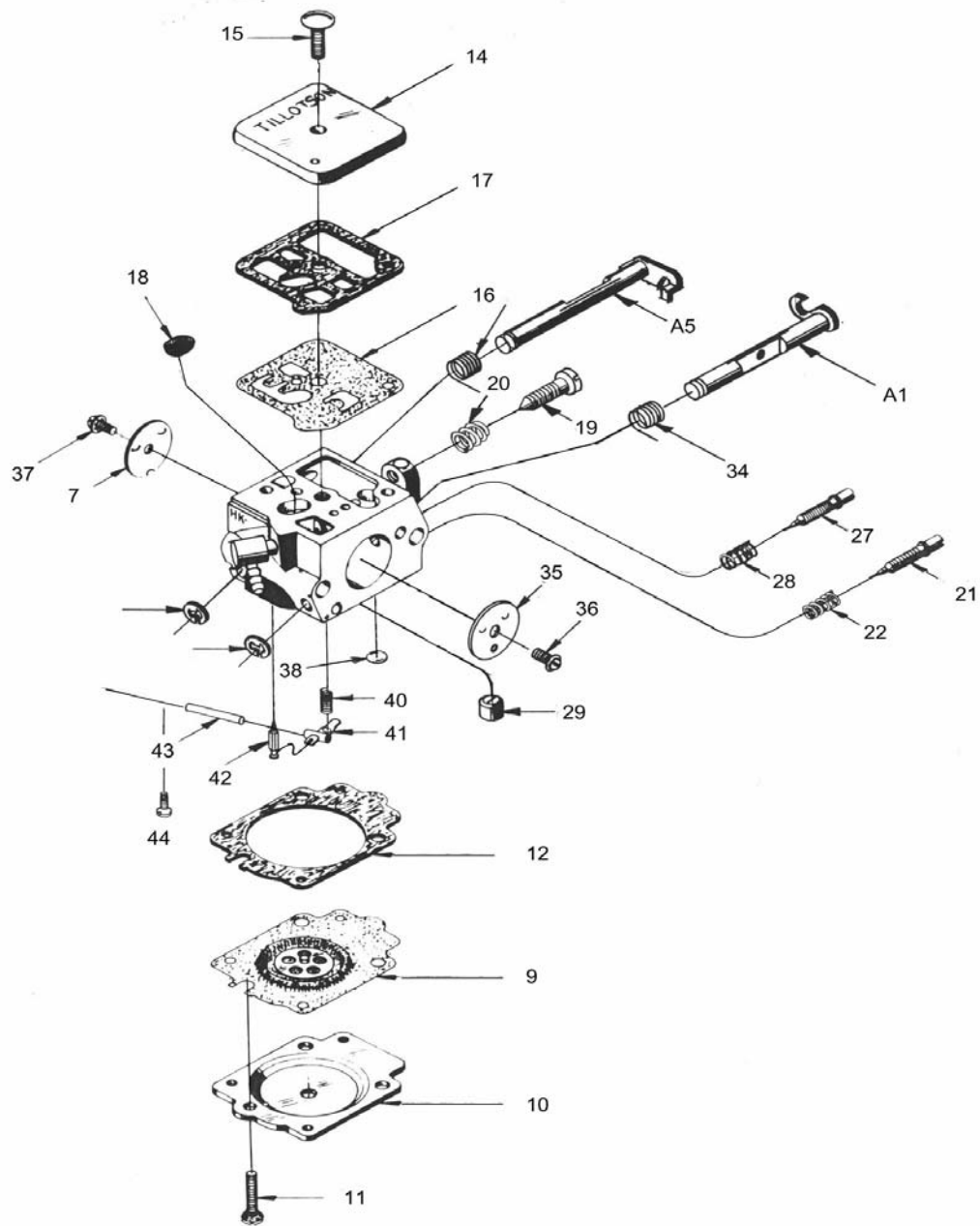
e-mail: sales@tillotson.ie



PARTS LIST

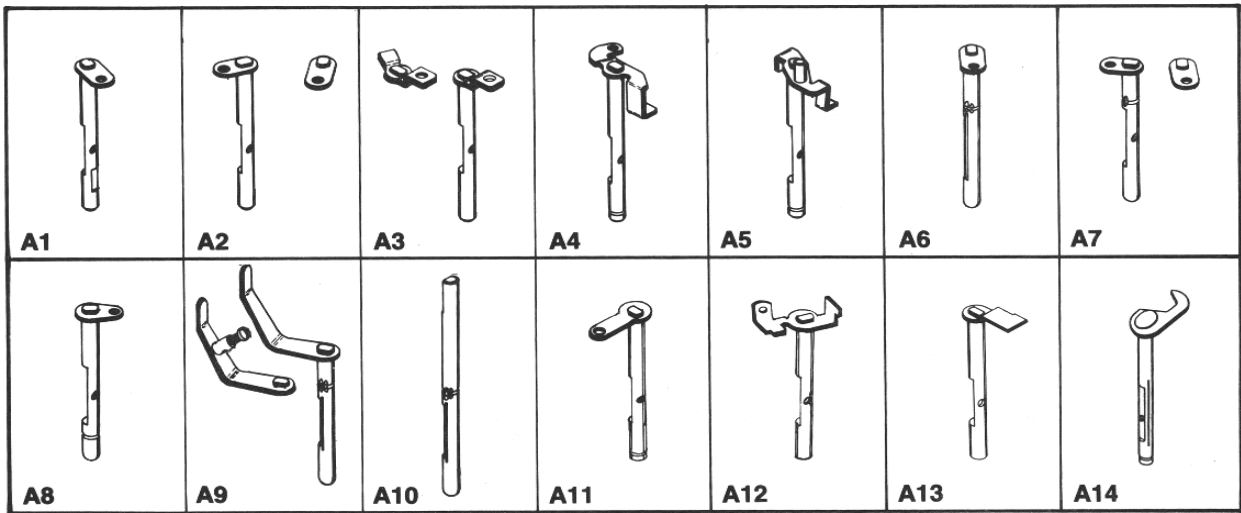
Last update: JULY 2014

Illustration of basic parts standard throughout HE series carburettor.
For individual model listing see following pages.

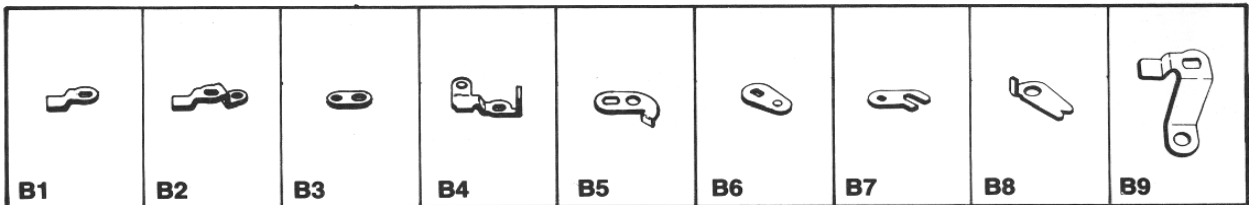


Parts illustrated are typical in appearance
and may not look exactly like the part required

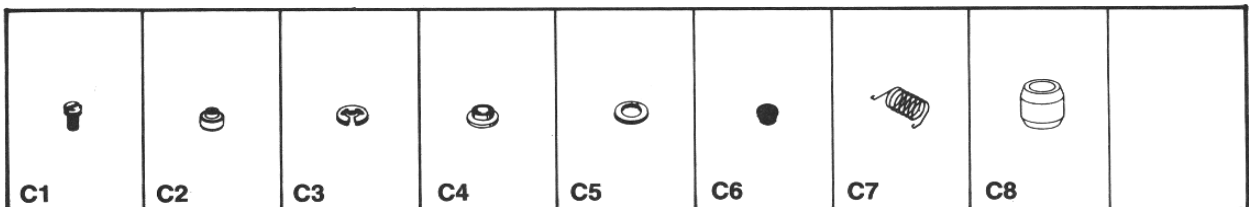
SHAFT & LEVER ASSEMBLIES



LEVERS



MISCELLANEOUS PARTS



| Carburetor Model | | HE-1A | HE-2A | HE-3A |
|---------------------|---------------------------------------|-------------------|----------------------|--------------------|
| Customer | | Electrolux Sweden | Andreas Stihl | Alpina Italy |
| Equipment Model No. | | | .625 - .628 Diameter | .592-.595 Diameter |
| Venturi | | 19/32" 15.08MM | 15.88 - 15.95MM | 15.0-15.1MM |
| Ref. No. | Part Name | | | |
| 1 | Body - Channel Screen | 95-180 | | 95-180 |
| 2 | Body - Channel Screen Ret. Ring | 55A-212 | 55A-223 | 55A-212 |
| 3 | Check Valve Disc. | | | |
| 4 | Check Valve Disc. Stop | | | |
| 6 | Choke - Friction Spring | 24C-8 | 24C-193 | 24C-281 |
| A6 | Choke - Shaft & Lever | | | |
| A9 | Choke - Shaft & Lever | | | |
| A10 | Choke - Shaft | | | |
| 7 | Choke - Shutter | 14-471 | 14-498 | 14-498 |
| | Choke - Washer | 78A-226 | | |
| | Choke - Lever | 25-458 | 25-472 | 26-1291 |
| | Choke - Shutter Screw | 15C-20 | 15C-20 | 15C-20 |
| | Choke - Friction Ball | | | 206-121 |
| +*9 | Diaphragm | 237-606 | 237-606 | 237-606 |
| 10 | Diaphragm - Cover | 91A-344 | 91B-205 | 91A-342 |
| 11 | Diaphragm - Cover Ret. Screw (3) | 15C-6 | 15C-6 | 15C-6 |
| +*12 | Diaphragm - Gasket | 16B-273 | 16B-273 | 16B-273 |
| 13 | Flange Gasket | | | |
| 14 | Fuel - Pump Cover | 91B-970 | 91B-970 | 91A-330 |
| 15 | Fuel - Pump Cover Ret. Screw | 15B-370 | 15B-370 | 15B-370 |
| +*16 | Fuel - Pump Diaphragm - | 237-205 | 237-205 | 237-205 |
| +*17 | Fuel - Pump Gasket | 16B-272 | 16B-272 | 16B-272 |
| *18 | Fuel - Strainer Screen | 95-177 | 95-177 | 95-177 |
| 19 | Idle Speed - Adjustment Screw | 15C-3 | 15C-3 | 15B-404 |
| 20 | Idle Speed - Adjustment Screw Spring | 24C-15 | 24C-15 | 24C-15 |
| 21 | Low Speed - Mixture Needle | 43A-132 | 43A-132 | 43A-132 |
| 22 | Low Speed - Mixture Needle Spring | 24B-331 | 24B-331 | 24B-331 |
| *23 | Inlet - Control Lever | 155A-53 | 155A-53 | 155A-53 |
| 24 | Inlet - Control Lever Fulcrum Pin | 32-80 | 32-80 | 32-80 |
| | Inlet - Fulcrum Pin Retaining Screw | 15B-329 | 15B-329 | 15B-329 |
| *25 | Inlet - Needle | 34-219 | 34-219 | 34-219 |
| 26 | Inlet - Tension Spring | 24B-378 | 24B-374 | 24B-374 |
| 27 | High Speed - Mixture Screw | 43A-149 | 43A-132 | 43A-149 |
| 28 | High Speed - Mixture Screw Spring | 24B-331 | 24B-331 | 24B-331 |
| 29 | Main Nozzle | | 363-559 | |
| | Main Nozzle Welch Plug | 179-60 | 179-60 | |
| B2 | Throttle - Lever | 12B-417 | | 12B-289 |
| B3 | Throttle - Shaft Sleeve (2) | | | 102-217 |
| B4 | Throttle - Lever | | | |
| C1 | Throttle - Lever Ret. Screw | | | |
| C2 | Throttle - Lever Retaining Screw | 15B-348 | | 15B-348 |
| C3 | Throttle - Shaft 'E' Ring | 29-220 | | |
| A1 | Throttle - Shaft & Lever | 13-2062 | 13-2016 | 13-2007 |
| A3 | Throttle - Shaft & Lever | | | |
| A4 | Throttle - Shaft & Lever | | | |
| 34 | Throttle - Shaft Return Spring | 24C-241 | 24B-458 | 24B-474 |
| 35 | Throttle - Shutter | | 14A-6 | 14-491 |
| 36 | Throttle - Shutter Ret. Screw | 15C-20 | 15C-20 | 15C-20 |
| 37 | Choke Shutter Screw | | | |
| 38 | Welch Plug | | | |
| 40 | Inlet Spring | | | |
| 41 | Inlet Lever | | | |
| 42 | Inlet Needle | | | |
| 43 | Fulcrum Pin | | | |
| 44 | Fulcrum Screw | | | |
| * | Metering - By Pass Chamber Welch Plug | 179-59 | 179-59 | 179-59 |
| | Repair Parts Kit | RK-1HE | RK-1HE | RK-1HE |
| | Diaphragm - & Gasket Set | DG-1HK | DG-1HK | DG-1HK |

*Indicates contents of Repair Kit

+Indicates contents of Diaphragm & Gasket Set

| Carburetor Model | | HE-4A | HE-5A | HE-6A |
|---------------------|---------------------------------------|---------------|---------------|--------------------|
| Customer | | Jonsereds | Andreas Stihl | Alpina |
| Equipment Model No. | | | | |
| Venturi | | .531 Diameter | .531 Diameter | 5/3" - 16MM |
| Ref. No. | Part Name | | | |
| 1 | Body - Channel Screen | 95-180 | | |
| 2 | Body - Channel Screen Ret. Ring | 55A-212 | | |
| 3 | Check Valve Disc. | | | |
| 4 | Check Valve Disc. Stop | | | |
| 6 | Choke - Friction Spring | | | 206-121 24B-281 |
| A6 | Choke - Shaft & Lever | | | |
| A9 | Choke - Shaft & Lever | | | |
| A10 | Choke - Shaft | | | |
| 7 | Choke - Shutter | 14-471 | 14A-1 | |
| | Choke - Washer | | | |
| | Choke - Lever | 26-1242 | | |
| | Choke - Shutter Screw | 15C-20 | 15C-20 | 14A-23 |
| | Choke Shutter Screw | | | 15C-20 |
| +*9 | Diaphragm | 237-606 | 237-606 | 237-606 |
| 10 | Diaphragm - Cover | 91A-344 | 91B-205 | 91A-344 |
| 11 | Diaphragm - Cover Ret. Screw (3) | 15C-6 | 15C-6 | 15C-6 |
| +*12 | Diaphragm - Gasket | 16B-273 | 16B-273 | 16B-273 |
| 13 | Flange Gasket | | | |
| 14 | Fuel - Pump Cover | 91B-214 | 91B-214 | 91B-218 |
| 15 | Fuel - Pump Cover Ret. Screw | 15B-370 | 15B-370 | 15B-370 |
| +*16 | Fuel - Pump Diaphragm - | 237-205 | 237-205 | 237-160 |
| +*17 | Fuel - Pump Gasket | 16B-272 | 16B-272 | 16B-272 |
| *18 | Fuel - Strainer Screen | 95-177 | 95-177 | 95-177 |
| 19 | Idle Speed - Adjustment Screw | 15C-3 | 15C-3 | 15B-404 |
| 20 | Idle Speed - Adjustment Screw Spring | 24C-15 | 24C-15 | 24C-15 |
| 21 | Low Speed - Mixture Needle | 43A-132 | 43A-132 | 43A-132 |
| 22 | Low Speed - Mixture Needle | 24B-331 | 24B-331 | 24B-331 |
| | | | | 155A-53 |
| *23 | Inlet - Control Lever | 155A-53 | 155A-53 | 32-80 |
| 24 | Inlet - Control Lever Fulcrum Pin | 32-80 | 32-80 | |
| | Inlet - Fulcrum Pin Retaining Screw | 15B-329 | | 15B-329 |
| *25 | Inlet - Needle | 34-219 | | 34-219 |
| 26 | Inlet - Tension Spring | 24B-369 | 24B-374 | 24B-384 |
| 27 | High Speed - Mixture Screw | 43A-132 | 43A-132 | 43A-149 |
| 28 | High Speed - Mixture Screw Spring | 24B-331 | 24B-331 | 24B-331 |
| 29 | Main Nozzle | | 363-559 | 363-559 |
| B2 | Throttle - Lever | 12B-259 | 12B-392 | 12B-417 |
| B3 | Throttle - Shaft Sleeve (2) | 102-217 | 102-217 | 102-217 |
| B4 | Throttle - Lever | | | |
| C1 | Throttle - Lever Ret. Screw | | | |
| C2 | Throttle - Lever Retaining Screw | 15B-348 | 15B-348 | 15B-348 |
| C3 | Throttle - Shaft 'E' Ring | 55A-212 | | |
| A1 | Throttle - Shaft & Lever | 13-2025 | 13-2007 | 13-2080 |
| A3 | Throttle - Shaft & Lever | | | 26-1291 |
| A4 | Throttle - Shaft & Lever | | | |
| 34 | Throttle - Shaft Return Spring | 24B-456 | 24B-444 | 24B-474 |
| 35 | Throttle - Shutter | 14-432 | 14-432 | 14A-44 |
| 36 | Throttle - Shutter Ret. Screw | 15C-20 | 15C-20 | 15C-20 |
| 37 | Choke Shutter Screw | | | |
| 38 | Welch Plug | | | |
| 40 | Inlet Spring | | | |
| 41 | Inlet Lever | | | |
| 42 | Inlet Needle | | | |
| 43 | Fulcrum Pin | | | |
| 44 | Fulcrum Screw | | | |
| | Main Nozzle Welch Plug | 179-60 | | |
| * | Metering - By Pass Chamber Welch Plug | 179-59 | 179-59 | 179-59 |
| | Repair Parts Kit | RK-1HE | RK-1HE | RK-1HE |
| | Diaphragm - & Gasket Set | DG-1HK | DG-1HK | DG-1HK |

*Indicates contents of Repair Kit

+Indicates contents of Diaphragm & Gasket Set

| Carburetor Model | | HE-7A | HE-8A | HE-9B |
|---------------------|---------------------------------------|---------------|--------------------|----------------|
| Customer | | Alpina | Opem | Wacker Germany |
| Equipment Model No. | | | .621-.625 Diameter | .453 Diameter |
| Venturi | | 11/16"-17.5MM | 15.8-15.9MM | 11.5MM |
| Ref. No. | Part Name | | | |
| 7 | Choke - Shutter | | 27-320 | 14A-6 |
| | Choke - Washer | | | |
| | Choke - Lever | | | |
| | Choke - Shutter Screw | 14A-23 | | |
| | Choke - Shutter Screw | 15C-20 | 15C-20 | 15C-20 |
| | Choke - Friction Ball | 206-121 | 206-121 | 206-121 |
| | Choke - Friction Spring | 24B-281 | 24B-281 | 24B-281 |
| | Choke Spacing Sleeve | | | 102-221 |
| +*9 | Diaphragm | 237-606 | 237-606 | 237-606 |
| 10 | Diaphragm - Cover | 91A-344 | 91A-373 | 91A-344 |
| 11 | Diaphragm - Cover Ret. Screw (3) | 15C-6 | 15C-6 | 15C-6 |
| +*12 | Diaphragm - Gasket | 16B-273 | 16B-273 | 16B-273 |
| 13 | Flange Gasket | | | |
| 14 | Fuel - Pump Cover | 91B-218 | 91B-214 | 91B-218 |
| 15 | Fuel - Pump Cover Ret. Screw | 15B-370 | 15B-370 | 15B-370 |
| +*16 | Fuel - Pump Diaphragm - | 237-205 | 237-205 | 237-160 |
| +*17 | Fuel - Pump Gasket | 16B-272 | 16B-272 | 16B-272 |
| *18 | Fuel - Strainer Screen | 95-177 | 95-177 | 95-177 |
| 19 | Idle Speed - Adjustment Screw | 15B-404 | 15B-404 | 15B-404 |
| 20 | Idle Speed - Adjustment Screw Spring | 24C-15 | 24C-15 | 24C-15 |
| 21 | Low Speed - Mixture Needle | 43A-132 | 43A-132 | |
| 22 | Low Speed - Mixture Needle Spring | 24B-331 | 24B-331 | |
| *23 | Inlet - Control Lever | 155A-53 | 155A-53 | 155A-53 |
| 24 | Inlet - Control Lever Fulcrum Pin | 32-80 | 32-80 | 32-80 |
| | Inlet - Fulcrum Pin Retaining Screw | 15B-329 | 15B-329 | 15B-329 |
| *25 | Inlet - Needle | 34-219 | 34-219 | 34-219 |
| 26 | Inlet - Tension Spring | 24B-384 | 24B-374 | |
| 27 | High Speed - Mixture Screw | 43A-149 | 43A-149 | |
| 28 | High Speed - Mixture Screw Spring | 24B-331 | 24B-331 | |
| 29 | Main Nozzle | 363-559 | 363-559 | 363-559 |
| B2 | Throttle - Lever | 12B-477 | 12B-383 | 12-1215 |
| B3 | Throttle - Shaft Sleeve (2) | 102-217 | | |
| B4 | Throttle - Lever | | | |
| C1 | Throttle - Lever Ret. Screw | | | |
| C2 | Throttle - Lever Retaining Screw | 15B-348 | 15B-348 | 15B-348 |
| C3 | Throttle - Shaft 'E' Ring | | | |
| A1 | Throttle - Shaft & Lever | 13-2080 | 13-1991 | 13-2130 |
| A3 | Throttle - Shaft & Lever | 26-1291 | 26-1196 | 26A-227 |
| A4 | Throttle - Shaft & Lever | | | |
| 34 | Throttle - Shaft Return Spring | 24B-474 | 24B-440 | 24B-458 |
| 35 | Throttle - Shutter | 14A-44 | 14-494 | 14-432 |
| 36 | Throttle - Shutter Ret. Screw | 15C-20 | 15C-20 | 15C-20 |
| 37 | Choke Shutter Screw | | | |
| 38 | Welch Plug | | | |
| 40 | Inlet Spring | | | |
| 41 | Inlet Lever | | | |
| 42 | Inlet Needle | | | |
| 43 | Fulcrum Pin | | | |
| 44 | Fulcrum Screw | | | |
| | Main Nozzle Welch Plug | | | |
| * | Metering - By Pass Chamber Welch Plug | 179-59 | 179-59 | 179-59 |
| | Main Jet | | | 49B-87 |
| | Idle Jet | | | 49B-76 |
| | Repair Parts Kit | RK-1HE | RK-1HE | RK-1HE |
| | Diaphragm - & Gasket Set | DG-1HE | DG-1HE | DG-1HE |

*Indicates contents of Repair Kit

+Indicates contents of Diaphragm & Gasket Set

| | | | |
|----------------------------|---------------------------------------|---------------|--|
| Carburetor Model | | HE-10A | |
| Customer | | Alpina | |
| Equipment Model No. | | | |
| Venturi | | 5/8" - 16MM | |
| Ref. No. | Part Name | | |
| 6 | Choke - Friction Spring | 24B-281 | |
| A6 | Choke - Shaft & Lever | | |
| A9 | Choke - Shaft & Lever | | |
| A10 | Choke - Shaft | | |
| 7 | Choke - Shutter | | |
| | Choke - Washer | | |
| | Choke - Lever | | |
| | Choke - Shutter Screw | 14A-23 | |
| | Choke - Friction Ball | 206-121 | |
| | Choke - Shutter Screw | 15C-20 | |
| +*9 | Diaphragm | 237-606 | |
| 10 | Diaphragm - Cover | 91A-344 | |
| 11 | Diaphragm - Cover Ret. Screw (3) | 15C-6 | |
| +*12 | Diaphragm - Gasket | 16B-273 | |
| 13 | Flange Gasket | | |
| 14 | Fuel - Pump Cover | 91B-218 | |
| 15 | Fuel - Pump Cover Ret. Screw | 15B-307 | |
| +*16 | Fuel - Pump Diaphragm - | 237-160 | |
| +*17 | Fuel - Pump Gasket | 16B-272 | |
| *18 | Fuel - Strainer Screen | 95-177 | |
| 19 | Idle Speed - Adjustment Screw | 15B-404 | |
| 20 | Idle Speed - Adjustment Screw Spring | 24C-15 | |
| 21 | Low Speed - Mixture Needle | 43A-187 | |
| 22 | Low Speed - Mixture Needle Spring | 24C-270 | |
| *23 | Inlet - Control Lever | 155A-53 | |
| 24 | Inlet - Control Lever Fulcrum Pin | 32-80 | |
| | Inlet - Fulcrum Pin Retaining Screw | 15B-329 | |
| *25 | Inlet - Needle | 34-219 | |
| 26 | Inlet - Tension Spring | 24B-384 | |
| 27 | High Speed - Mixture Screw | 43A-206 | |
| 28 | High Speed - Mixture Screw Spring | 24C-270 | |
| 29 | Main Nozzle | 363-651 | |
| | Limiters Module | 198-402 | |
| | Limiters Cap (2) | 318-32 | |
| B2 | Throttle - Lever | 12B-417 | |
| B3 | Throttle - Shaft Sleeve (2) | 102-217 | |
| B4 | Throttle - Lever | | |
| B8 | O' Ring - Mixture Needle (2) | 44-350 | |
| C1 | Throttle - Lever Ret. Screw | | |
| C2 | Throttle - Lever Retaining Screw | 15B-348 | |
| C3 | Throttle - Shaft 'E' Ring | | |
| A1 | Throttle - Shaft & Lever | 13-2080 | |
| A3 | Throttle - Shaft & Lever | 26-1291 | |
| A4 | Throttle - Shaft & Lever | | |
| 34 | Throttle - Shaft Return Spring | 24B-474 | |
| 35 | Throttle - Shutter | 14A-44 | |
| 36 | Throttle - Shutter Ret. Screw | 15C-20 | |
| 37 | Choke Shutter Screw | | |
| 38 | Welch Plug | | |
| 40 | Inlet Spring | | |
| 41 | Inlet Lever | | |
| 42 | Inlet Needle | | |
| 43 | Fulcrum Pin | | |
| 44 | Fulcrum Screw | | |
| | Main Nozzle Welch Plug | | |
| * | Metering - By Pass Chamber Welch Plug | 179-59 | |
| | Repair Parts Kit | RK-1HE | |
| | Diaphragm - & Gasket Set | DG-1HE | |

*Indicates contents of Repair Kit

+Indicates contents of Diaphragm & Gasket Set



HE SERIES

| Carburetor Model | | HE-11A | HE-12A | HE-19A |
|---------------------|--|----------------|----------------------|---------|
| Customer | | Wacker Germany | 3W Modelmotoren GMBH | Various |
| Equipment Model No. | | | | |
| Venturi | | .512 - 13mm | 13.5mm | 16.5mm |
| Ref. No. | Part Name | | | |
| 1 | Fuel Pump - Cover Screw | 15B-370 | 15B-370 | |
| 2 | Fuel Pump - Cover | 91B-217 | 91B-218 | |
| 3 | Fuel Pump - Gasket | +*16B-272 | +*16B-272 | |
| 4 | Fuel Pump - Diaphragm | +*237-160 | +*237-205 | |
| 5 | Fuel Pump - Inlet Screen | *95-233 | *95-177 | |
| 6 | Fuel Inlet - Tension Spring | 24B-378 | 24B-378 | |
| 7 | Fuel Inlet - Control Lever | *155-53 | *155A-53 | |
| 8 | Fuel Inlet- Fulcrum Pin | 32-80 | 32-80 | |
| 9 | Fuel Inlet - Fulcrum Pin Retaining Screw | 15B-329 | 15B-345 | |
| 10 | Fuel Inlet - Needle | *34-219 | *34-219 | |
| 11 | Metering - Covering Screw | 15C-6 | 15C-6 | |
| 12 | Metering - Cover | 91A-344 | 91A-344 | |
| 13 | Metering - Diaphragm | +*237-606 | +*237-606 | |
| 14 | Metering - Diaphragm Gasket | +*16B-273 | +*16B-273 | |
| | Main Nozzle Welch Plug | | 179-60 | |
| | Main Nozzle Screen | | 95-180 | |
| | Main Nozzle Retaining Ring | | 55A-212 | |
| 18 | Metering - Main Nozzle | 363-559 | | |
| 19 | Metering - By Pass Chamber Welch Plug | *179-59 | *179-59 | |
| 20 | Idle Speed - Adjustment Screw | 15B-404 | 15C-3 | |
| 21 | Idle Speed - Adjustment Screw Spring | 24C-15 | 24C-15 | |
| 22 | Idle Jet | 49B-76 | | |
| 22 | Low Speed - Mixture Needle | | 43A-132 | |
| 23 | Low Speed - Mixture Needle Spring | | 24B-331 | |
| 24 | Main Jet | | | |
| 24 | High Speed - Mixture Needle | 49B-87 | 43A-149 | |
| 25 | High Speed - Mixture Needle Spring | | 24B-331 | |
| | Choke - "E" Ring | | 29-220 | |
| | Choke - Washer | | 78A-226 | |
| A3 | Choke - Lever | | 25-458 | |
| 26A | Choke - Shaft | 26A-227 | | |
| 26B | Choke - Lever | 25-495 | | |
| 26C | Choke - Lever Screw | 15B-348 | | |
| 27 | Choke - Friction Spring | 24B-281 | | |
| 27 | Choke - Return Spring | | 24C-8 | |
| 28 | Choke - Friction Ball | 206-121 | | |
| 29 | Choke - Shutter | 14A-6 | 14A-1 | |
| 30 | Choke - Shutter Screw | 15C-20 | 15C-20 | |
| | Choke Spacing Sleeve | 102-221 | | |
| A1 | Throttle - Shaft & Lever | 13-2130 | 13-2062 | |
| 31 | Throttle - Return Spring | 24B-458 | 24B-444 | |
| 32 | Throttle - Shutter | 14-432 | 14-471 | |
| 33 | Throttle - Shutter Screw | 15C-20 | 15C-20 | |
| B2 | Throttle - Lever Assembly Secondary | 12-1215 | 12B-417 | |
| C2 | Throttle - Lever Retaining Screw | 15B-348 | 15B-348 | |
| | Repair Parts Kit | RK-1HE | RK-1HE | RK-3HE |
| | Diaphragm - & Gasket Set | DG-1HK | DG-1HK | DG-3HE |

*Indicates contents of Repair Kit

+Indicates contents of Diaphragm & Gasket Set



HE SERIES

| Carburetor Model | | HE-20A | HE-22A | HE-23A |
|---------------------|--|---------------|------------|---------|
| Customer | | Andreas Stihl | | Various |
| Equipment Model No. | | | | |
| Venturi | | .531" | 15.0mm | 15.0mm |
| Ref. No. | Part Name | | | |
| 1 | Fuel Pump - Cover Screw | 15B-370 | 15C-78 | 15C-78 |
| 2 | Fuel Pump - Cover | 91B-217 | 91-B277 | 91-1033 |
| 3 | Fuel Pump - Gasket | +*16B-272 | 16B-409 | 16B-395 |
| 4 | Fuel Pump - Diaphragm | +*237-205 | 237-224 | 237-224 |
| 5 | Fuel Pump - Inlet Screen | *95-177 | 95-242 | 95-242 |
| 6 | Fuel Inlet - Tension Spring | 24B-374 | 24-B323 | 24-B323 |
| 7 | Fuel Inlet - Control Lever | *155-53 | 155-A77 | 155-A77 |
| 8 | Fuel Inlet- Fulcrum Pin | 32-80 | 32-91 | 32-91 |
| 9 | Fuel Inlet - Fulcrum Pin Retaining Screw | 15B-345 | 15C-72 | 15-C72 |
| 10 | Fuel Inlet - Needle | *34-219 | 34-230 | 34-230 |
| 11 | Metering - Covering Screw | 15C-30 | 15C-79 (4) | 15C-79 |
| 12 | Metering - Cover | 91B-292 | 91B-294 | 91A-295 |
| 13 | Metering - Diaphragm | +*237-606 | 237-690 | 237-690 |
| 14 | Metering - Diaphragm Gasket | +*16B-273 | 16B-395 | 16B-409 |
| | Main Nozzle | | 363-686 | 363-686 |
| | Main Nozzle Screen | | | |
| | Main Nozzle Retaining Ring | | | |
| 18 | Metering - Main Nozzle | | | |
| 19 | Metering - By Pass Chamber Welch Plug | *179-59 | | |
| 20 | Idle Speed - Adjustment Screw | 15B-404 | 15-C69 | 15-C104 |
| 21 | Idle Speed - Adjustment Screw Spring | 24C-15 | | |
| 22 | Idle Jet | | | |
| 22 | Low Speed - Mixture Needle | 43A-2 | 43-A230 | 43-A230 |
| 23 | Low Speed - Mixture Needle Spring | 24B-331 | 24-C301 | 24-C301 |
| 24 | Main Jet | | | |
| 24 | High Speed - Mixture Needle | 43A-2 | 43A-231 | 43-A203 |
| 25 | High Speed - Mixture Needle Spring | 24B-331 | 24C-301 | 24-C301 |
| | Choke - "E" Ring | 55A-223 | | |
| | Choke - Washer | | | |
| A3 | Choke - Lever | 26-1269 | | |
| A6 | Choke - Shaft & Lever | | 26-1325 | 26-1326 |
| 26A | Choke - Shaft | | | |
| 26B | Choke - Lever | | | |
| 26C | Choke - Lever Screw | | | |
| 27 | Choke - Friction Spring | | | |
| 27 | Choke - Return Spring | 24C-193 | | |
| 28 | Choke - Friction Ball | | | |
| 29 | Choke - Shutter | 14-498 | 27-382 | |
| 30 | Choke - Shutter Screw | 15C-20 | 15-C20 | 15-C20 |
| | Choke Spacing Sleeve | | | |
| A1 | Throttle - Shaft & Lever | 13-2151 | | |
| 31 | Throttle - Return Spring | 24B-458 | 24C-332 | 24-C332 |
| 32 | Throttle - Shutter | 14A-99 | 14A-83 | 14-A83 |
| 33 | Throttle - Shutter Screw | 15C-20 | 15C-20 | 15-C20 |
| B2 | Throttle - Lever Assembly Secondary | | | |
| B8 | "O" Ring - Mixture Needle | | 44-362 | 44-362 |
| C2 | Throttle - Lever Retaining Screw | | | |
| | Throttle "E" Ring | 55A-223 | | |
| | Repair Parts Kit | RK-1HE | RK-2HE | RK-2HE |
| | Diaphragm - & Gasket Set | DG-1HK | DG-2HE | DG-2HE |

*Indicates contents of Repair Kit

+Indicates contents of Diaphragm & Gasket Set